



**POLITECNICO
DI TORINO**




Modelling sand motion and protection systems

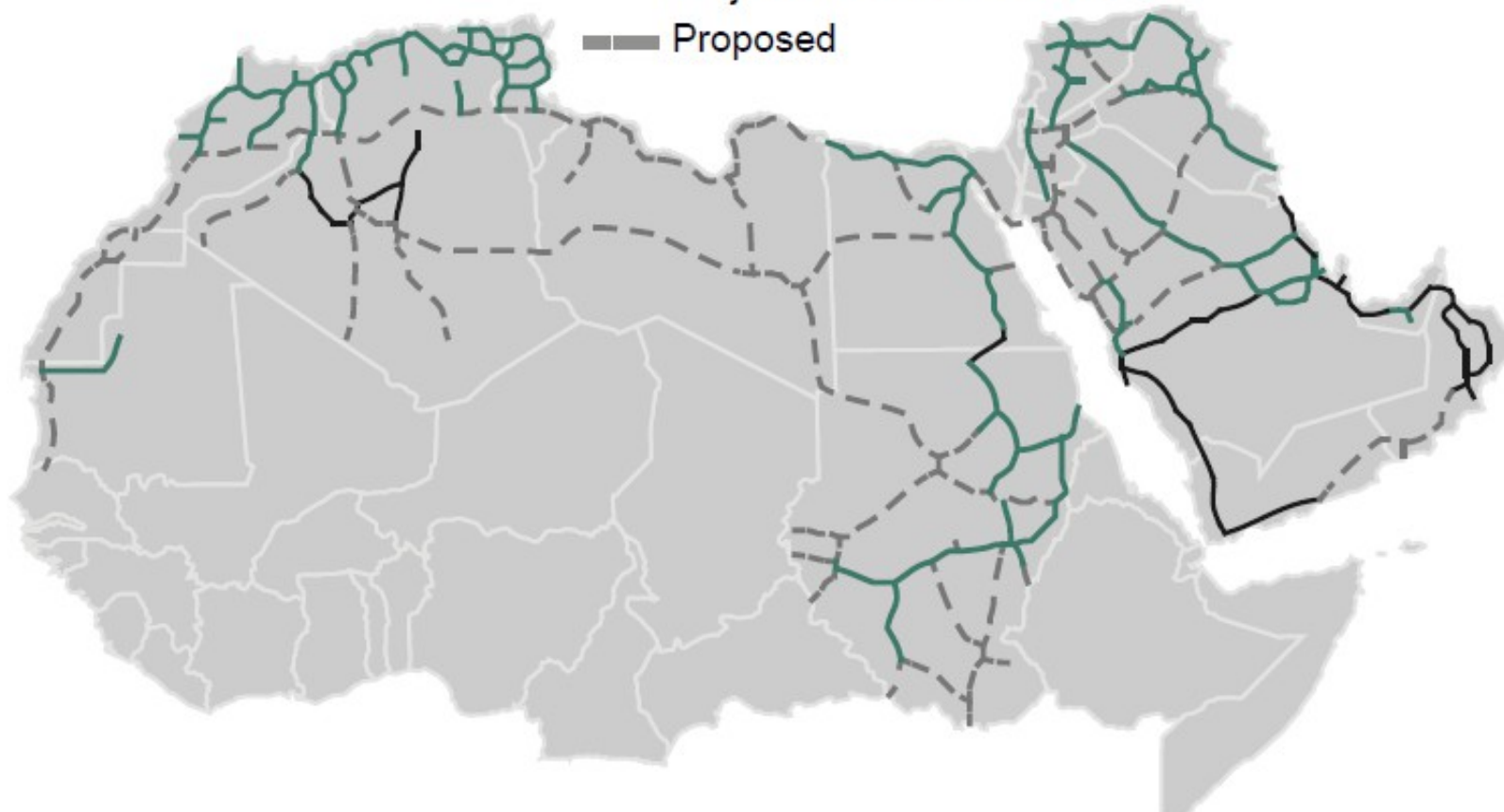
Luigi Preziosi





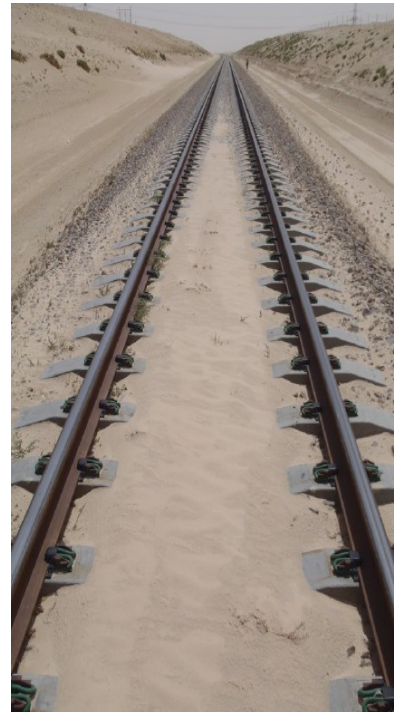
Progetti

-  In service
-  Project / under construction
-  Proposed





Problems



**Ballast
contamination**



Problems



Communication balise covering



- **Running train derailments**
- **Parked train trapping**
- **Asymmetric consumption of wheels and rails**



Problems



“We have to clean the track form sand every night”
El Pais, 6 febbraio 2015

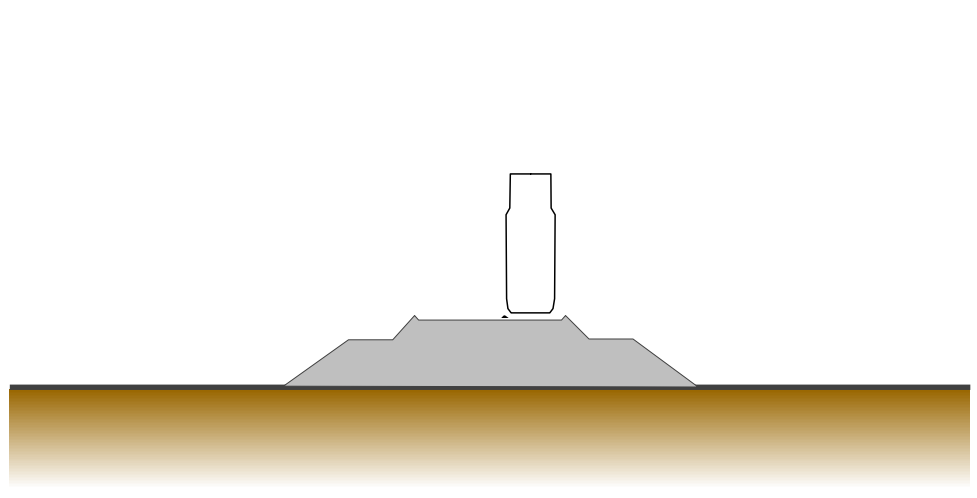


Problems





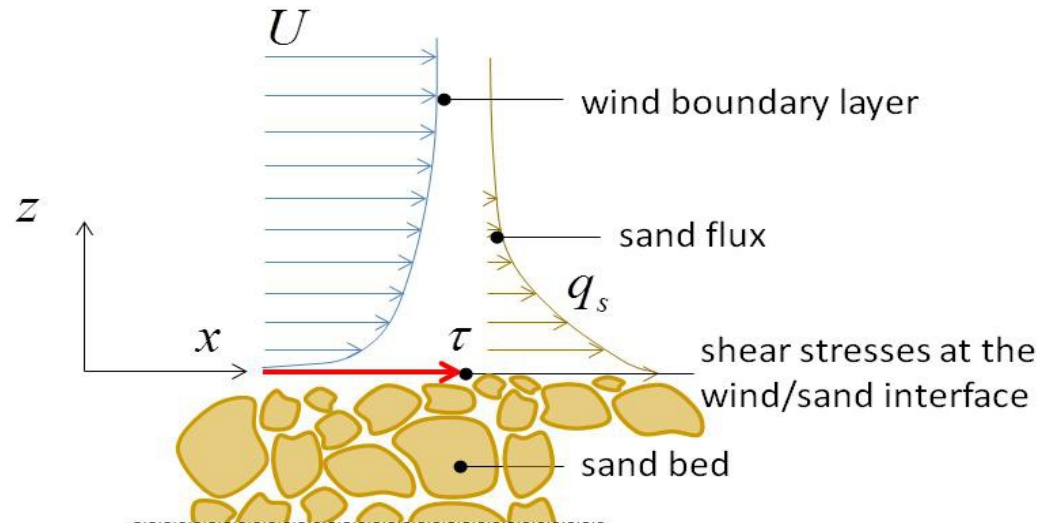
Standard protection systems



Phenomenological observation

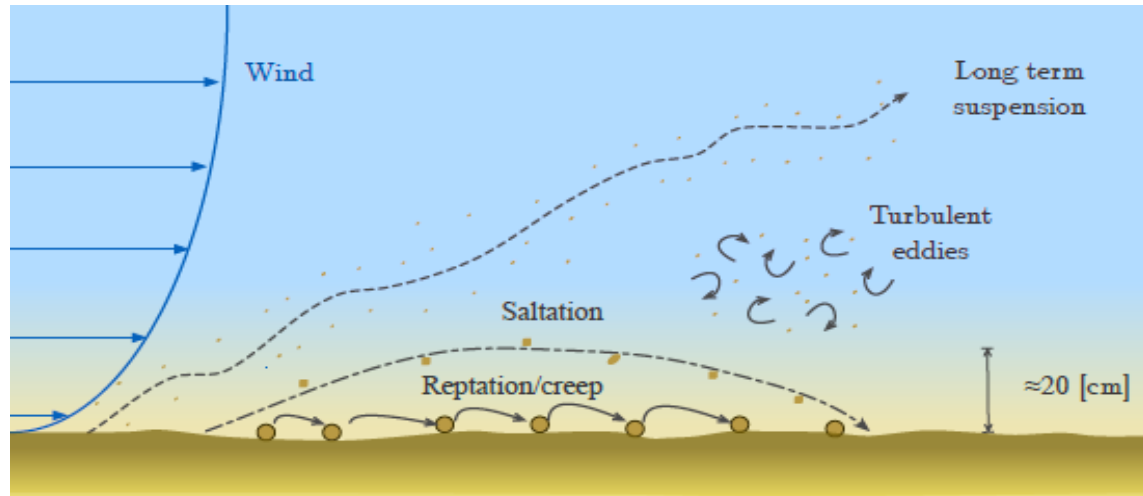


- **Erosion**



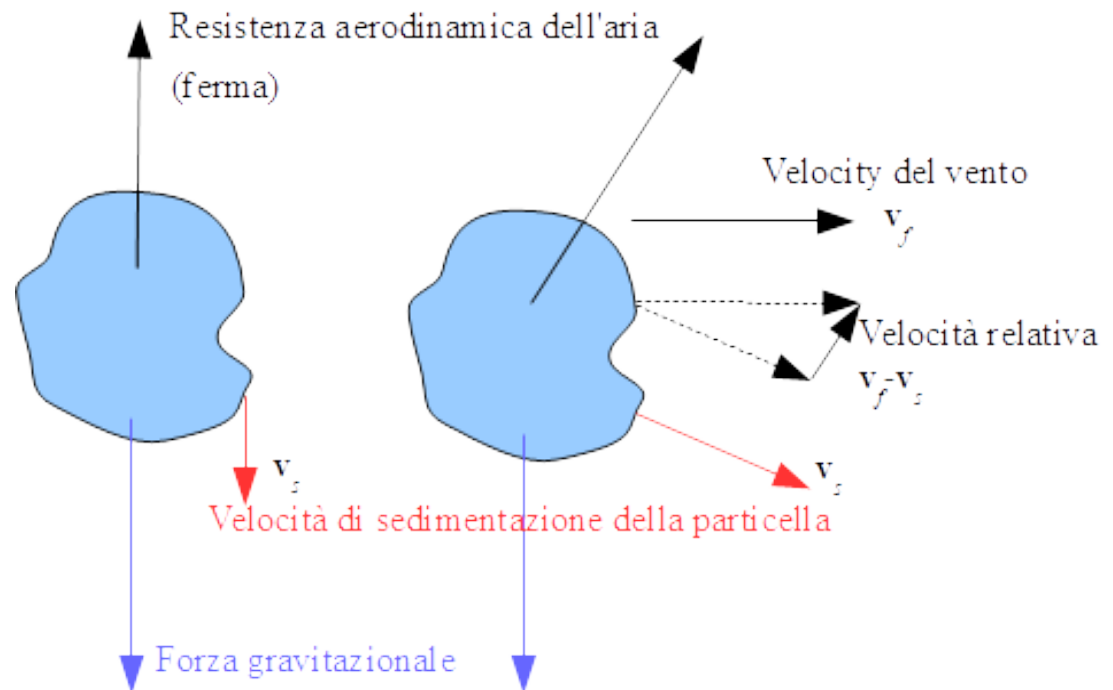
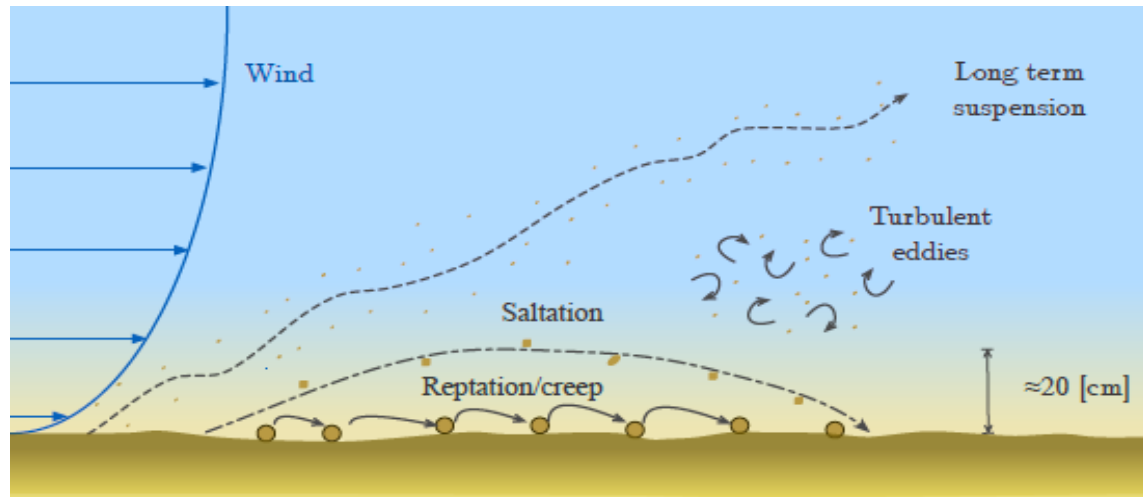
Osservazione fenomenologica

- **Erosion**
- **Transport**



Phenomenological observation

- Erosion
- Transport
- Sedimentation





Phenomenological observation

- Erosion
- Transport
- Sedimentation
- Sand structure interaction



Osservazione fenomenologica

- **Erosion**
- **Transport**
- **Sedimentation**
- **Sand structure interaction**
- **Sand avalanches**



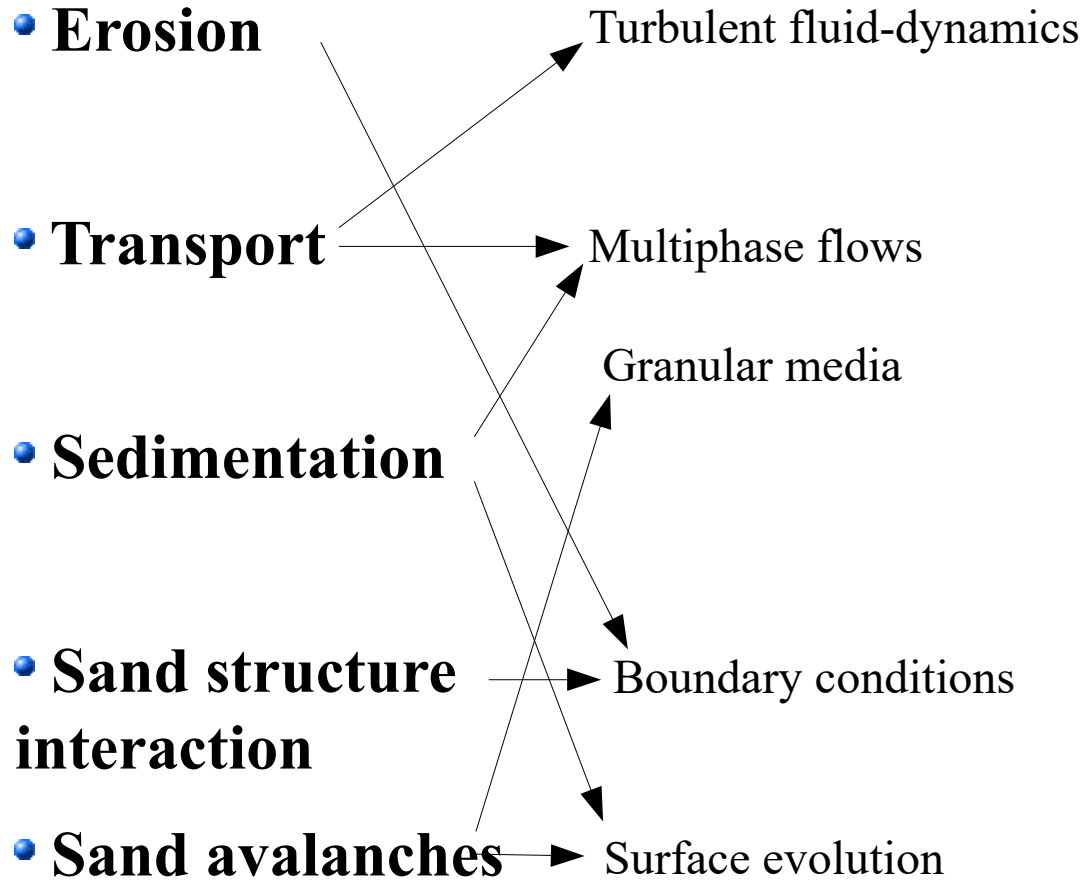


Osservazione fenomenologica

- **Erosione** Il vento interagisce con il terreno ed erode la sabbia
- **Trasporto** Il vento trasporta la sabbia
- **Sedimentazione** La sabbia sedimenta
La sabbia si accumula
- **Interazione con le strutture** Il flusso del vento e della sabbia viene modificato dalle strutture
- **Svalangamento** La sabbia scivola
La superficie evolve



Mathematical modelling



$$\begin{cases} \nabla \cdot \bar{u}_f = 0 \\ \frac{\partial \bar{u}_f}{\partial t} + \bar{u}_f \cdot \nabla \bar{u}_f = -\frac{1}{\rho_a} \nabla \bar{p} + \nabla \cdot [(\nu_a + \nu_t) \nabla \bar{u}_f] \\ \frac{\partial k}{\partial t} + \nabla \cdot (\bar{u}_f k) = \nabla \cdot [(\nu_a + \nu_t) \nabla k] + P_k - \gamma \omega k \\ \frac{\partial \omega}{\partial t} + \nabla \cdot (\bar{u}_f \omega) = \nabla \cdot [(\nu_a + \nu_t) \nabla \omega] + P_\omega - C_\omega \omega^2 \end{cases}$$

$$\begin{cases} \frac{\partial \rho_f}{\partial t} + \nabla \cdot (\rho_f \mathbf{u}_f) = 0, \\ \rho_f \left(\frac{\partial \mathbf{u}_f}{\partial t} + \mathbf{u}_f \cdot \nabla \mathbf{u}_f \right) = -\phi_f \nabla p + \nabla \cdot \mathbf{T}_f + \rho_f \mathbf{g} - \mathbf{m}, \end{cases}$$

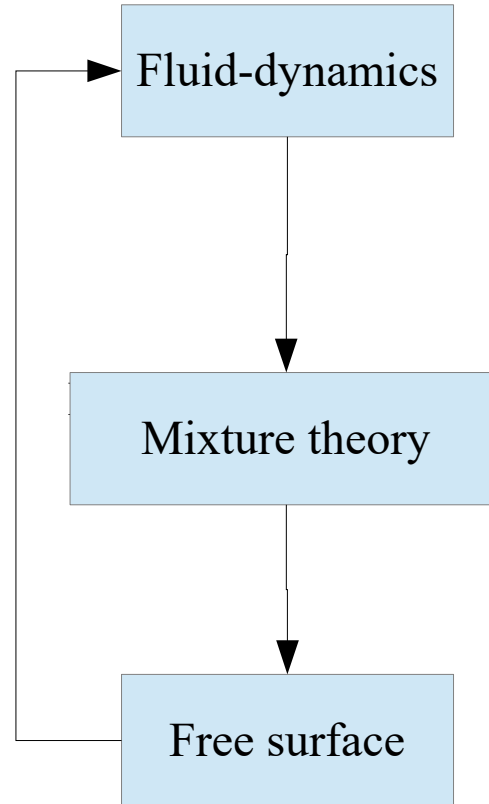
$$\begin{cases} \frac{\partial \rho_s}{\partial t} + \nabla \cdot (\rho_s \mathbf{u}_s) = 0, \\ \rho_s \left(\frac{\partial \mathbf{u}_s}{\partial t} + \mathbf{u}_s \cdot \nabla \mathbf{u}_s \right) = -\phi_s \nabla p + \nabla \cdot \mathbf{T}_s + \rho_s \mathbf{g} + \mathbf{m}, \end{cases}$$

$$q_s = \frac{w_{ej} \alpha \hat{\rho}_f}{gd} \hat{\beta} \left(u_*^2 - u_{*,t}^2 \right)_+$$

$$\frac{\partial h}{\partial t} = \nu \nabla \cdot \left[\frac{(|\nabla h| - \tan \bar{\theta})_+}{\sqrt{1 + |\nabla h|^2}} \frac{\nabla h}{|\nabla h|} \right] + q,$$

Modellizzazione matematica

- **Erosion**
- **Transport**
- **Sedimentation**
- **Sand avalanches**



$$\begin{cases} \nabla \cdot \bar{u}_f = 0 \\ \frac{\partial \bar{u}_f}{\partial t} + \bar{u}_f \cdot \nabla \bar{u}_f = -\frac{1}{\rho_a} \nabla \bar{p} + \nabla \cdot [(\nu_a + \nu_t) \nabla \bar{u}_f] \\ \frac{\partial k}{\partial t} + \nabla \cdot (\bar{u}_f k) = \nabla \cdot [(\nu_a + \nu_t) \nabla k] + P_k - \gamma \omega k \\ \frac{\partial \omega}{\partial t} + \nabla \cdot (\bar{u}_f \omega) = \nabla \cdot [(\nu_a + \nu_t) \nabla \omega] + P_\omega - C_\omega \omega^2 \end{cases}$$

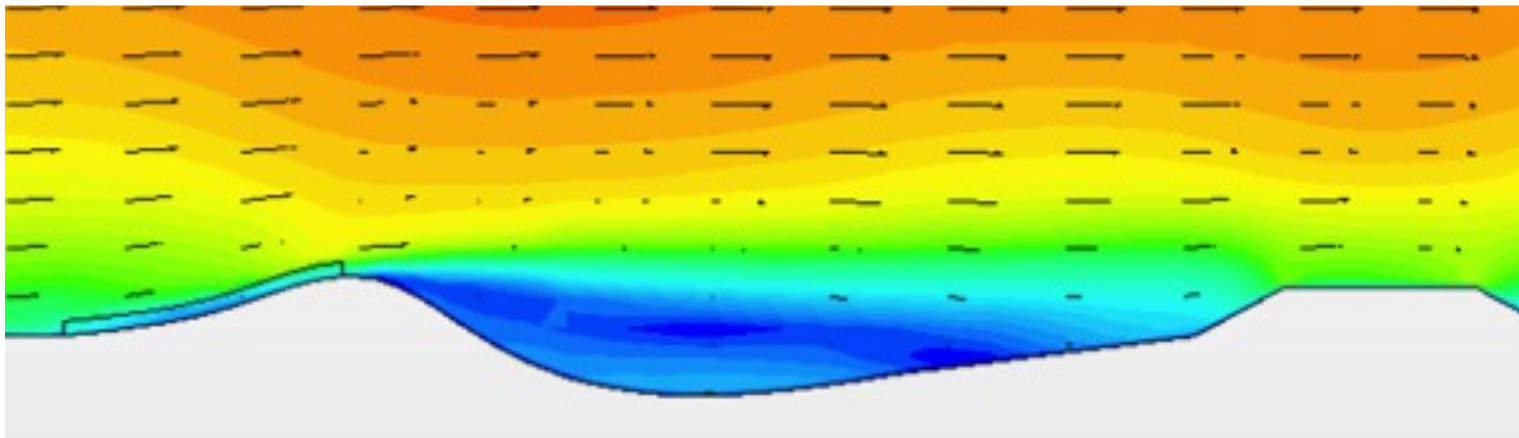
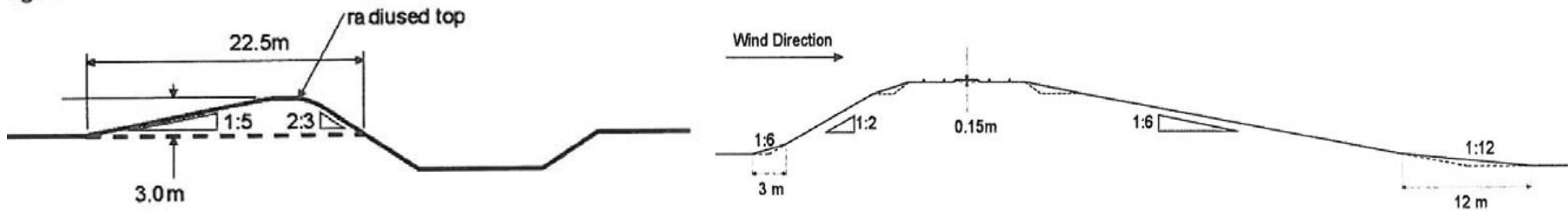
$$\begin{cases} \frac{\partial \rho_f}{\partial t} + \nabla \cdot (\rho_f \mathbf{u}_f) = 0, \\ \rho_f \left(\frac{\partial \mathbf{u}_f}{\partial t} + \mathbf{u}_f \cdot \nabla \mathbf{u}_f \right) = -\phi_f \nabla p + \nabla \cdot \mathbf{T}_f + \rho_f \mathbf{g} - \mathbf{m}, \end{cases}$$

$$\begin{cases} \frac{\partial \rho_s}{\partial t} + \nabla \cdot (\rho_s \mathbf{u}_s) = 0, \\ \rho_s \left(\frac{\partial \mathbf{u}_s}{\partial t} + \mathbf{u}_s \cdot \nabla \mathbf{u}_s \right) = -\phi_s \nabla p + \nabla \cdot \mathbf{T}_s + \rho_s \mathbf{g} + \mathbf{m}, \end{cases}$$

$$\begin{cases} q_s = \frac{w_{ej} \alpha \hat{\rho}_f}{gd} \hat{\beta} \left(u_{*}^2 - u_{*,t}^2 \right)_+ \\ \frac{\partial h}{\partial t} = \nu \nabla \cdot \left[\frac{(|\nabla h| - \tan \bar{\theta})_+}{\sqrt{1 + |\nabla h|^2}} \frac{\nabla h}{|\nabla h|} \right] + q, \end{cases}$$

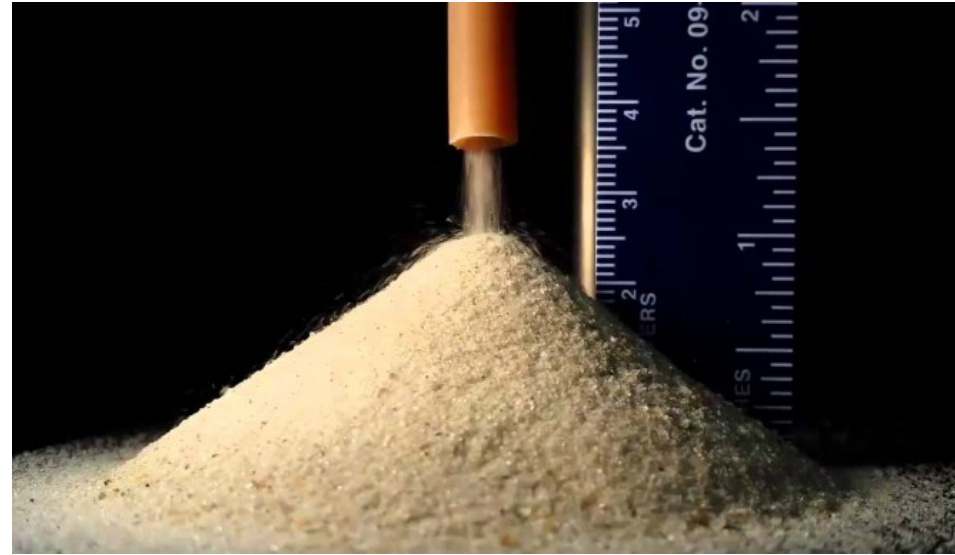


Fluid-dynamics





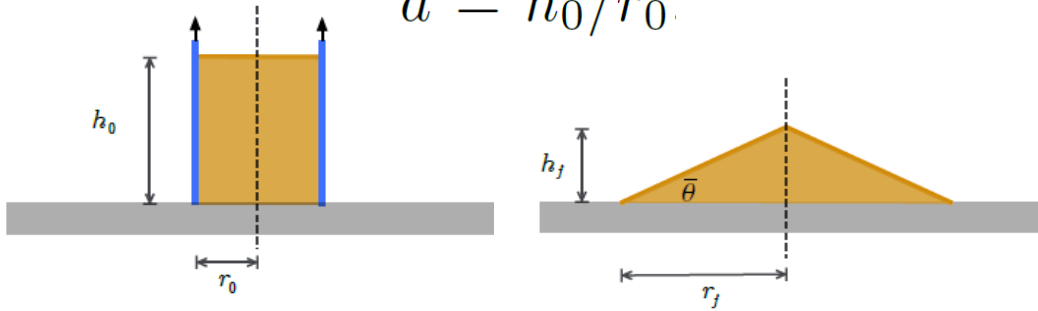
Sand sliding



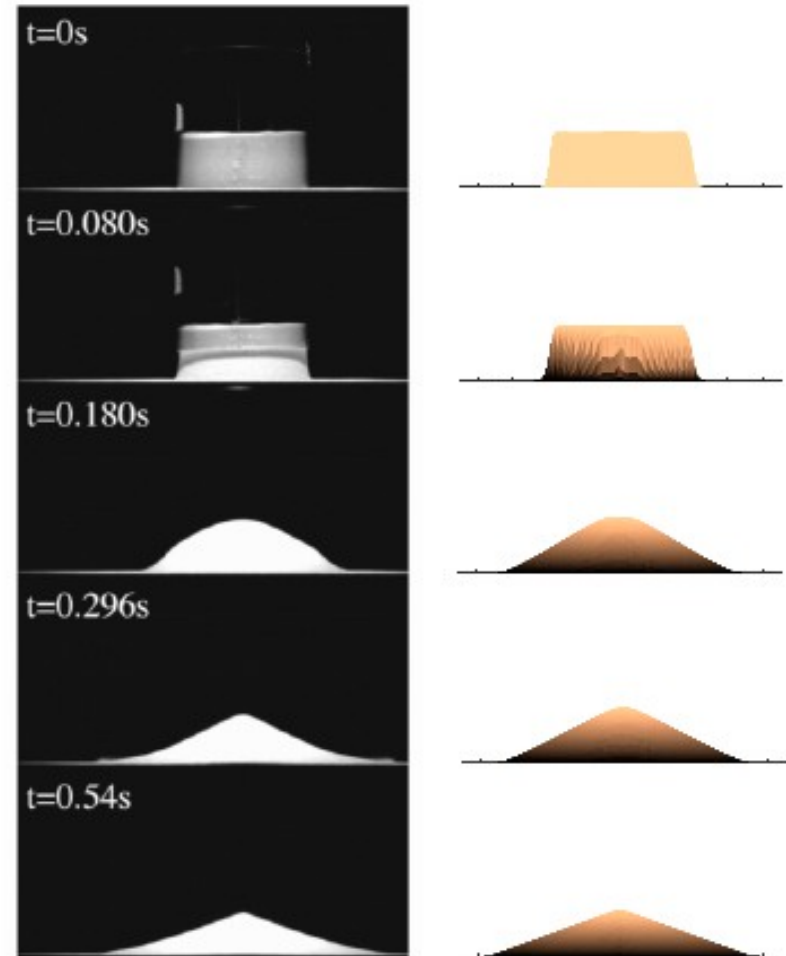
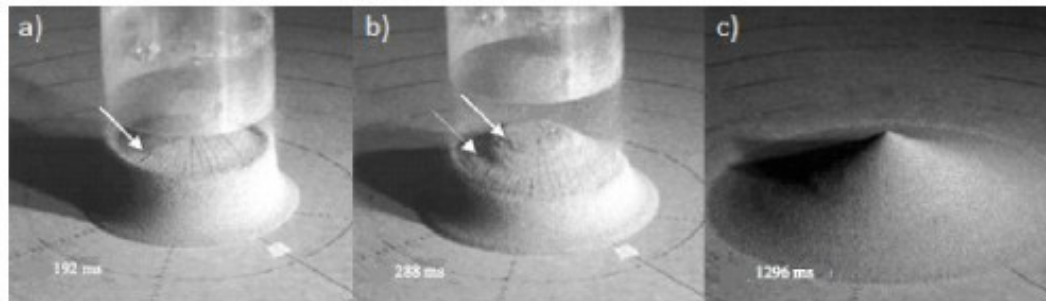
$$\frac{\partial h}{\partial t} = \nu \nabla \cdot \left[\frac{(|\nabla h| - \tan \bar{\theta})_+}{\sqrt{1 + |\nabla h|^2}} \frac{\nabla h}{|\nabla h|} \right] + q,$$

Sand sliding

$$a = h_0/r_0$$

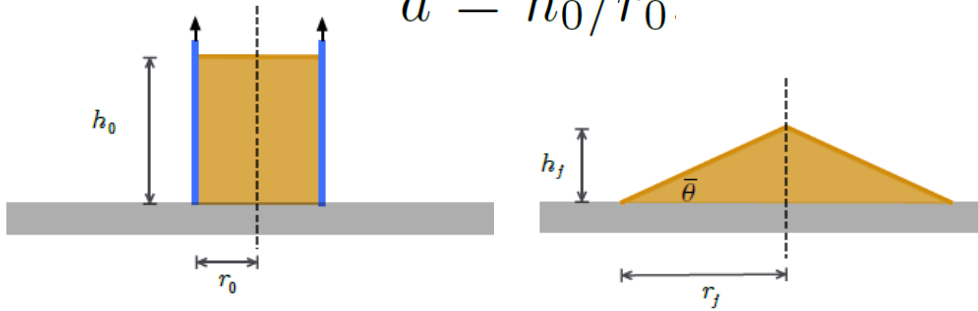


$a > 0.74$

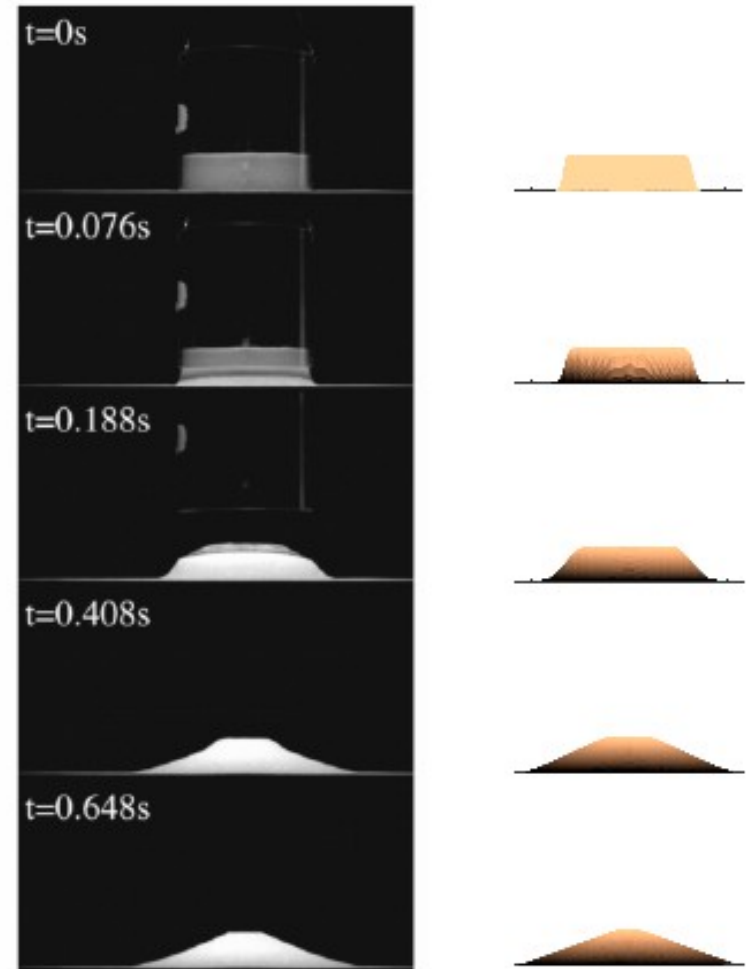
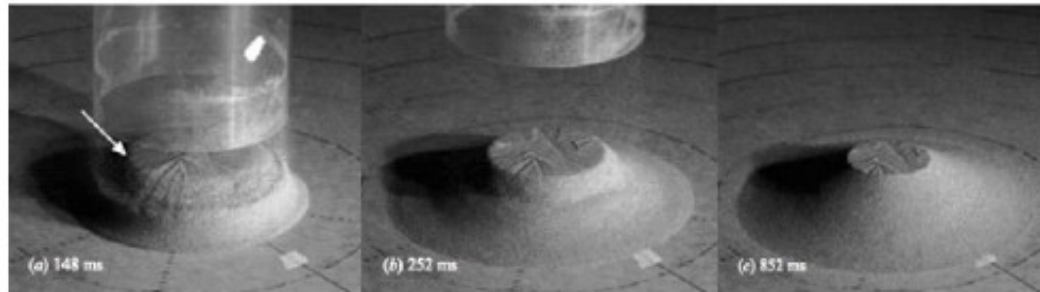


Sand sliding

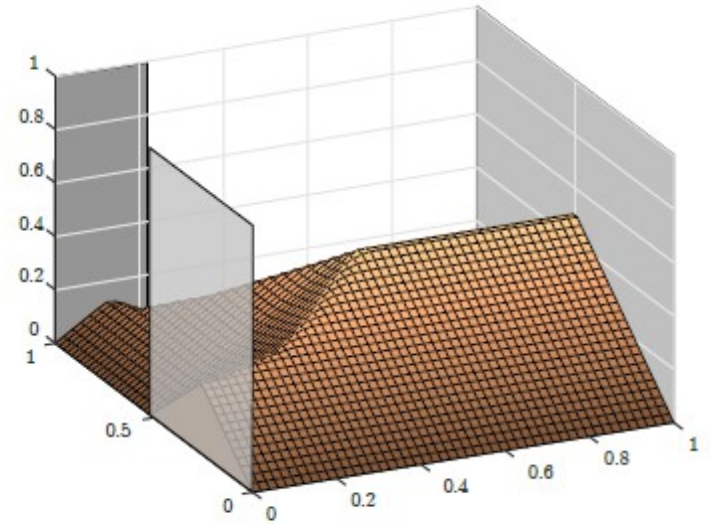
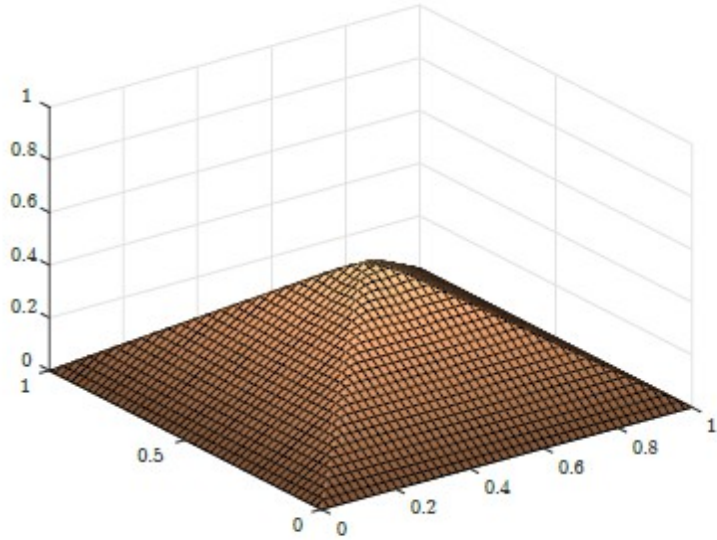
$$a = h_0/r_0$$



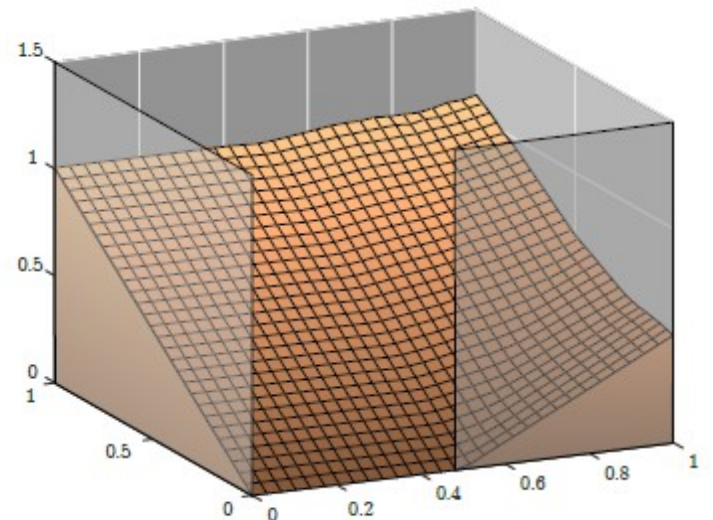
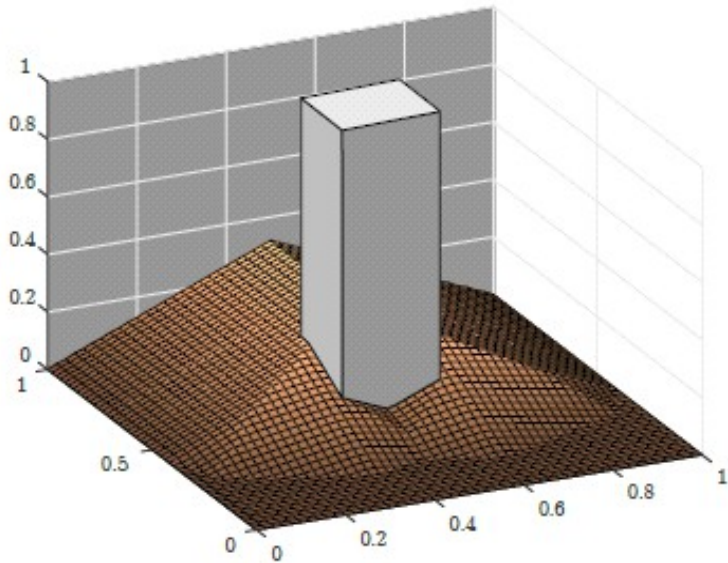
$a < 0.74$



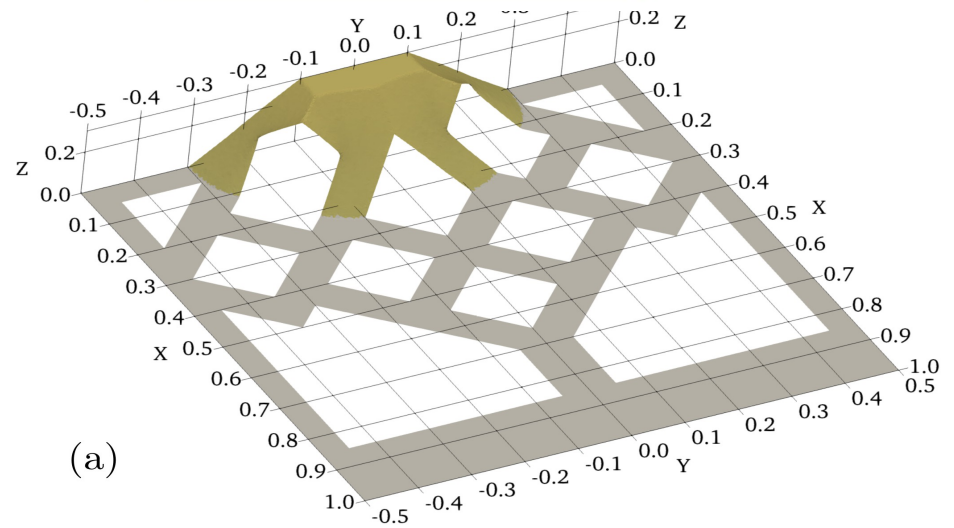
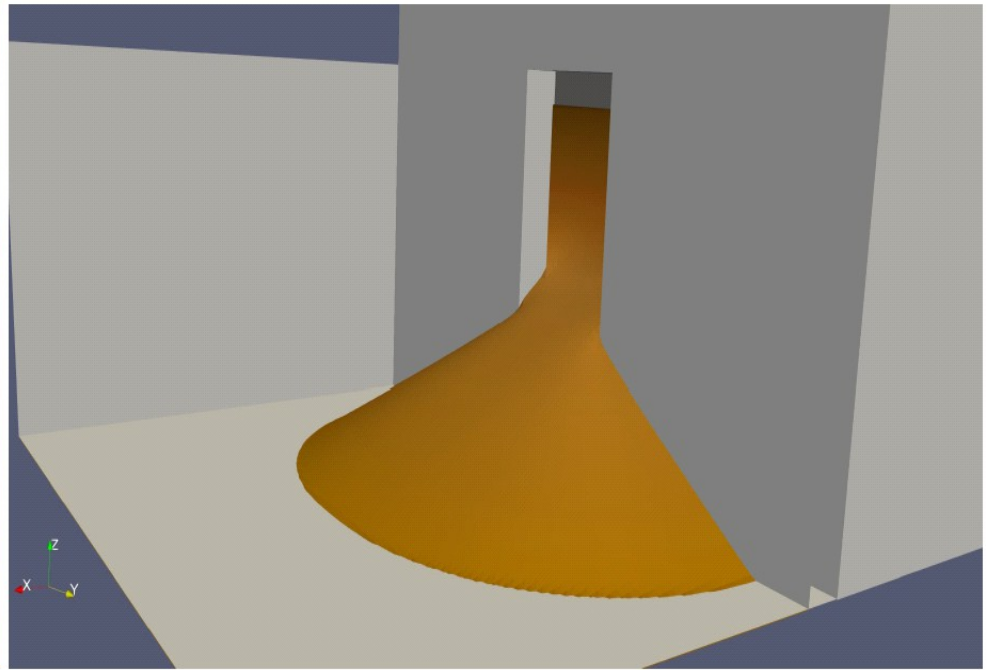
Sand sliding



(a)

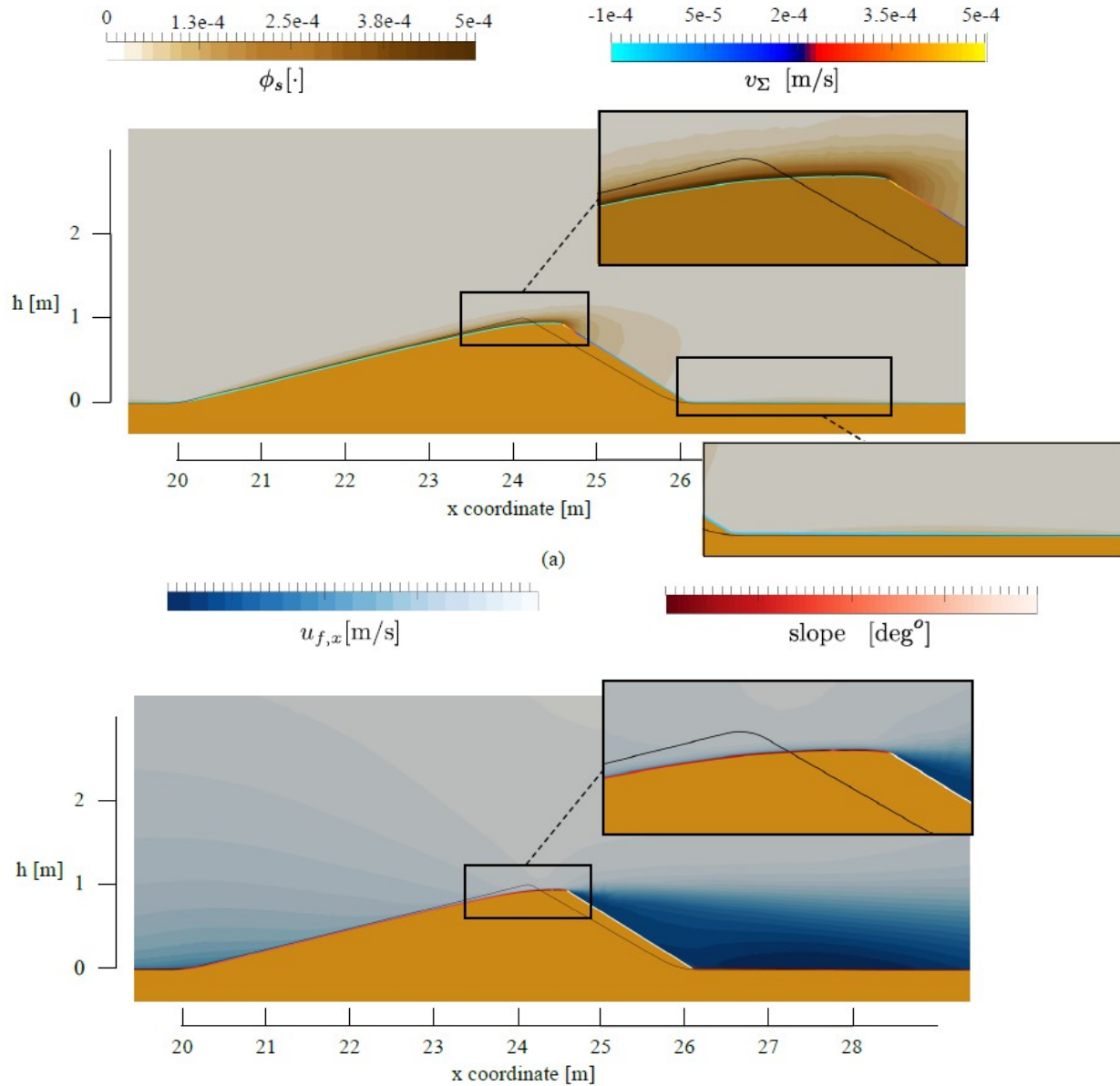


Sand sliding

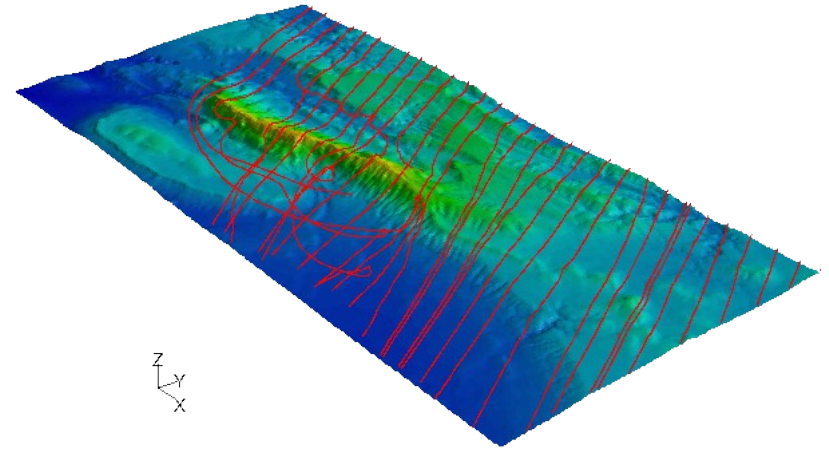




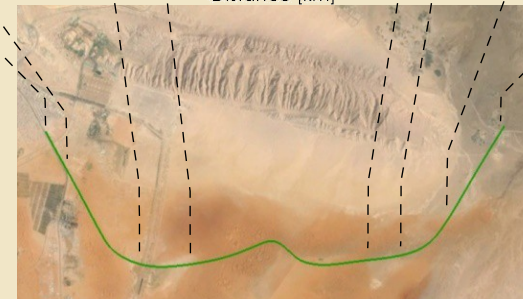
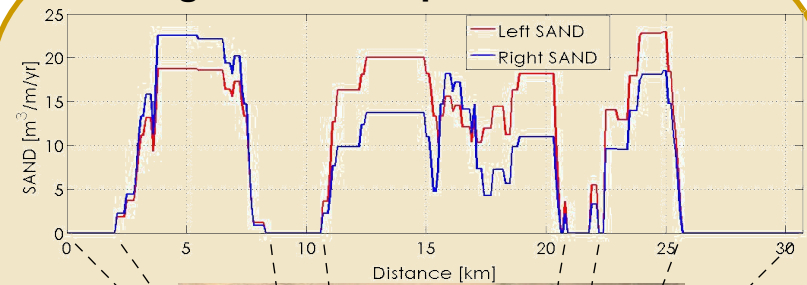
Dune motion



Sand drift assessment

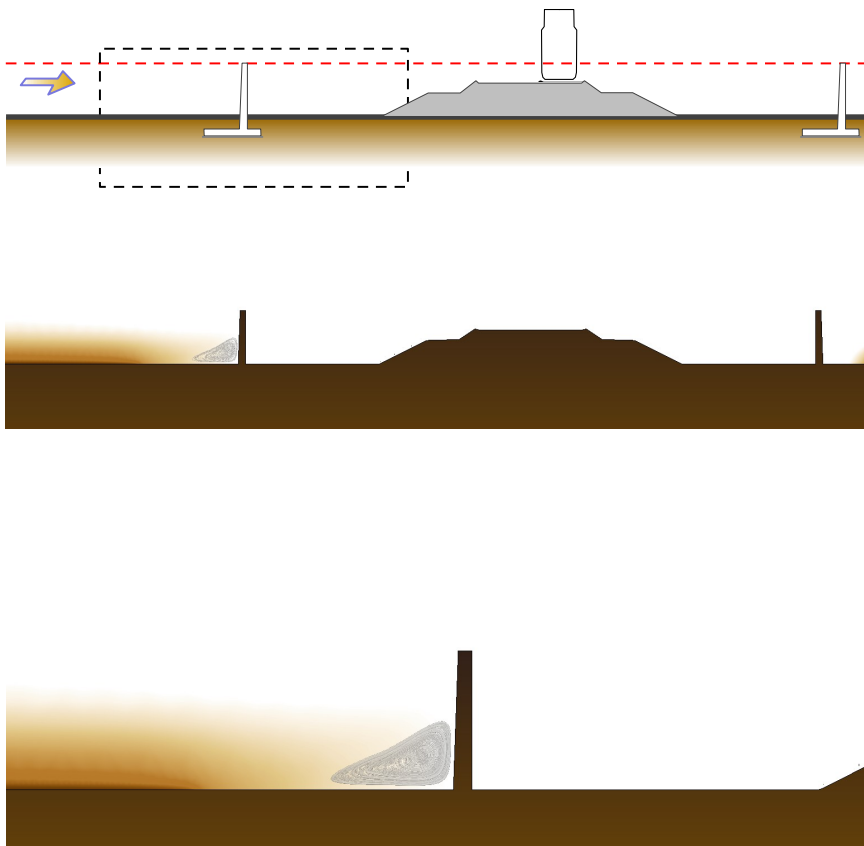


Segments to be protected

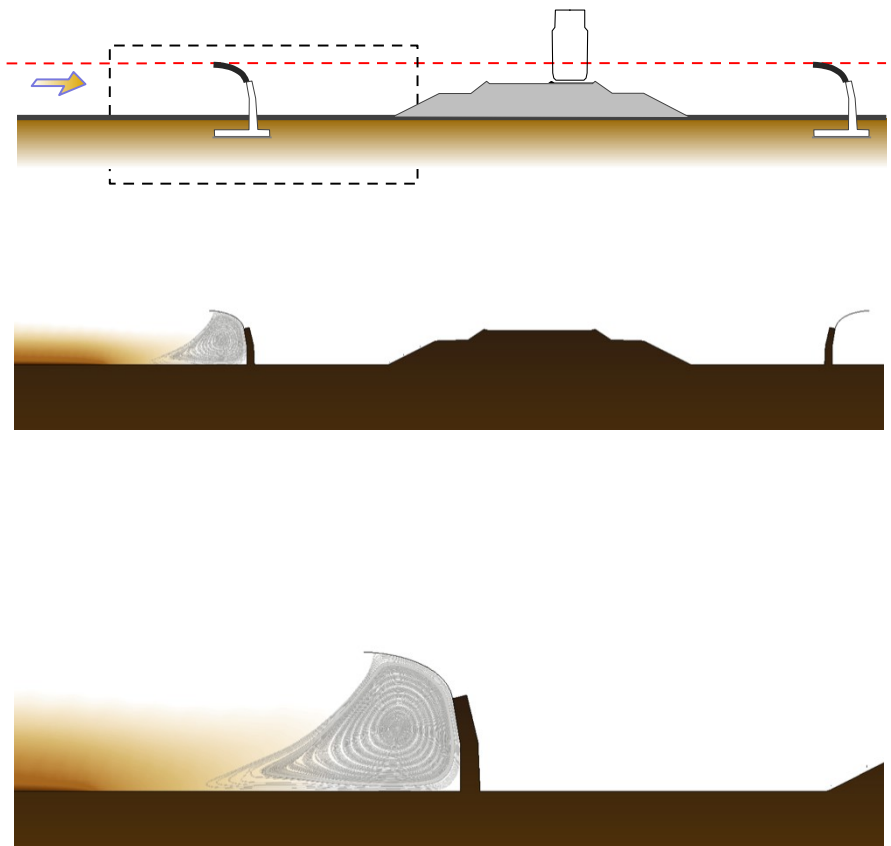


Simulation of protection systems

vertical wall

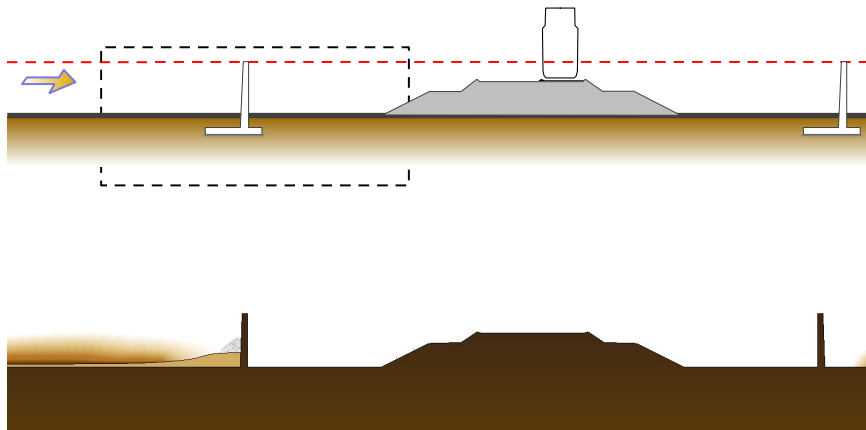


SMaRT barrier

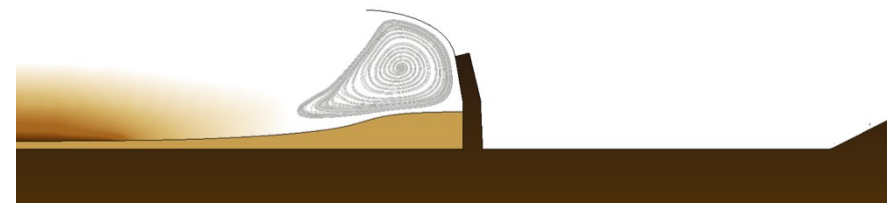
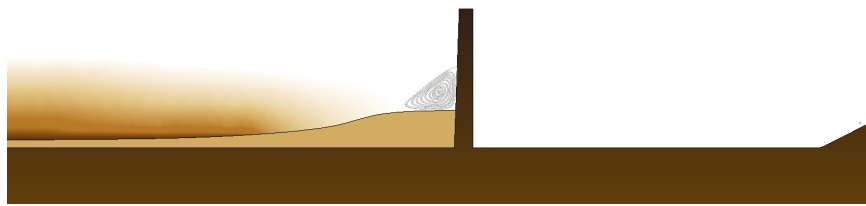
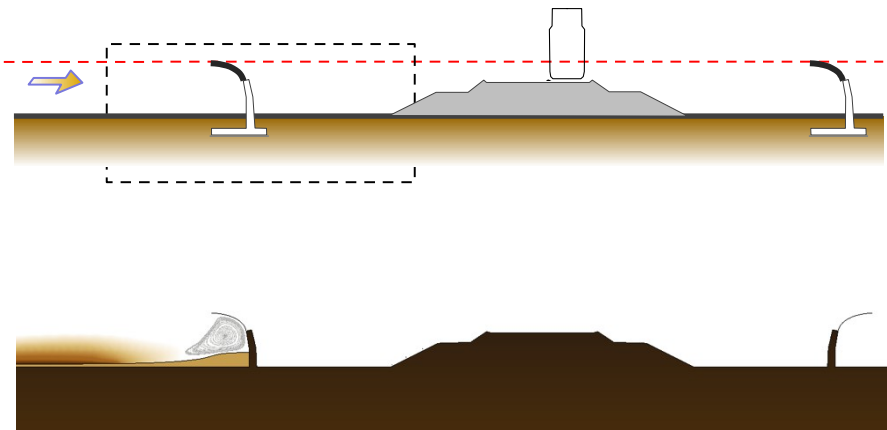


Simulation of protection systems

vertical wall



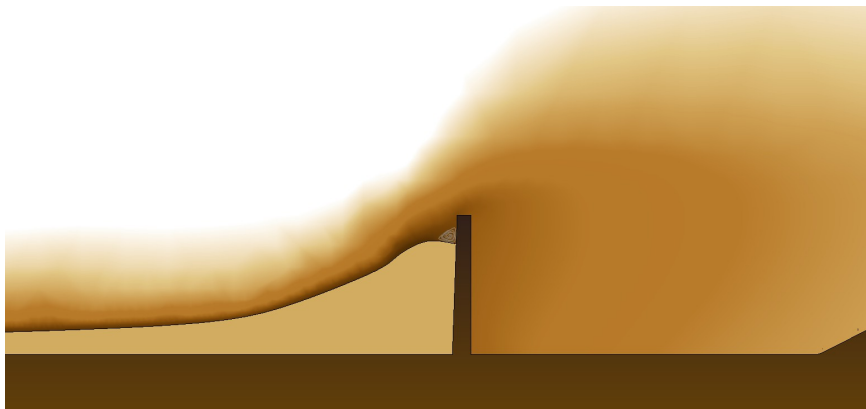
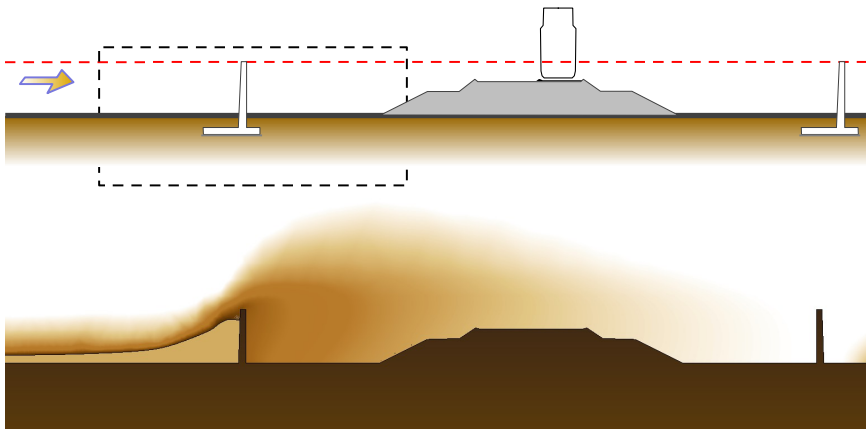
SMaRT barrier



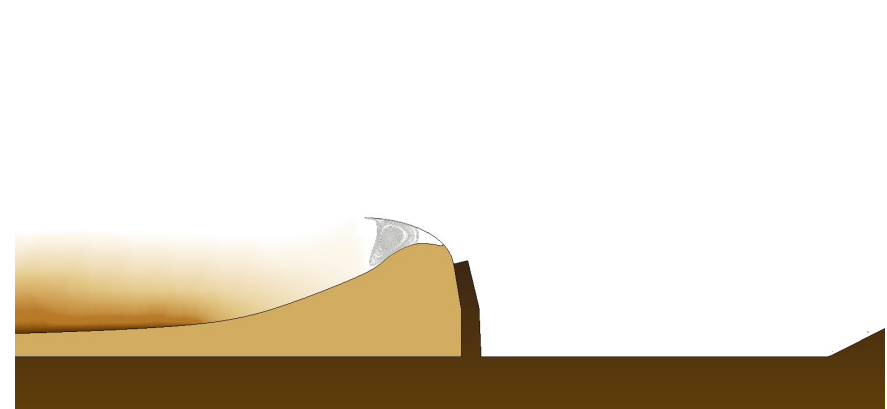
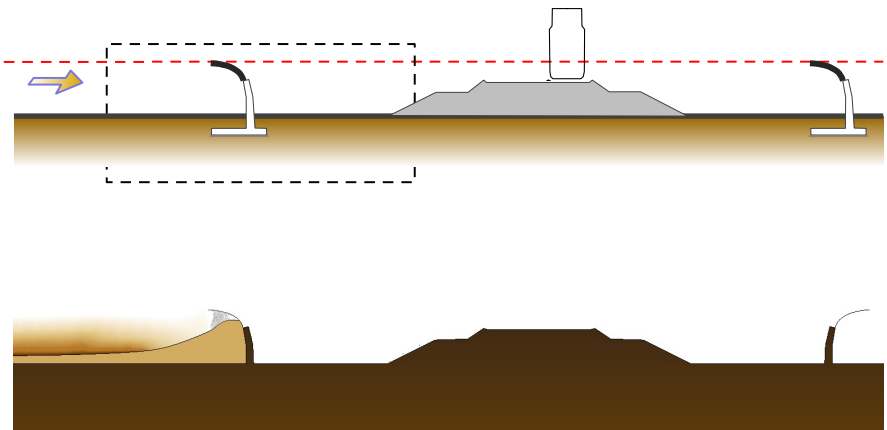


Simulation of protection systems

vertical wall

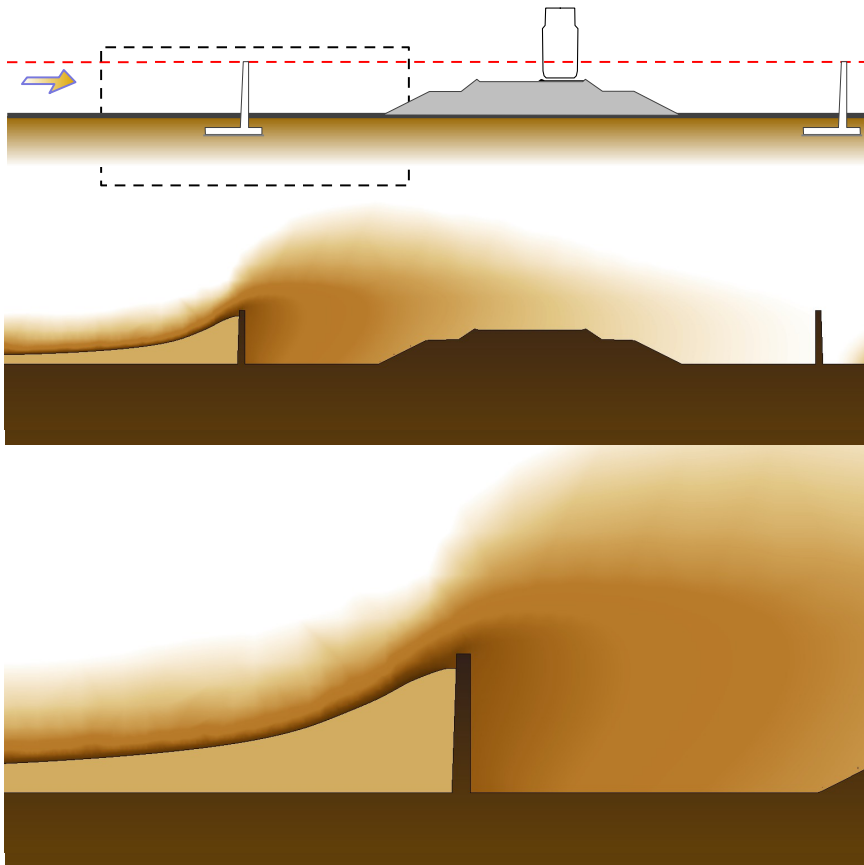


SMaRT barrier

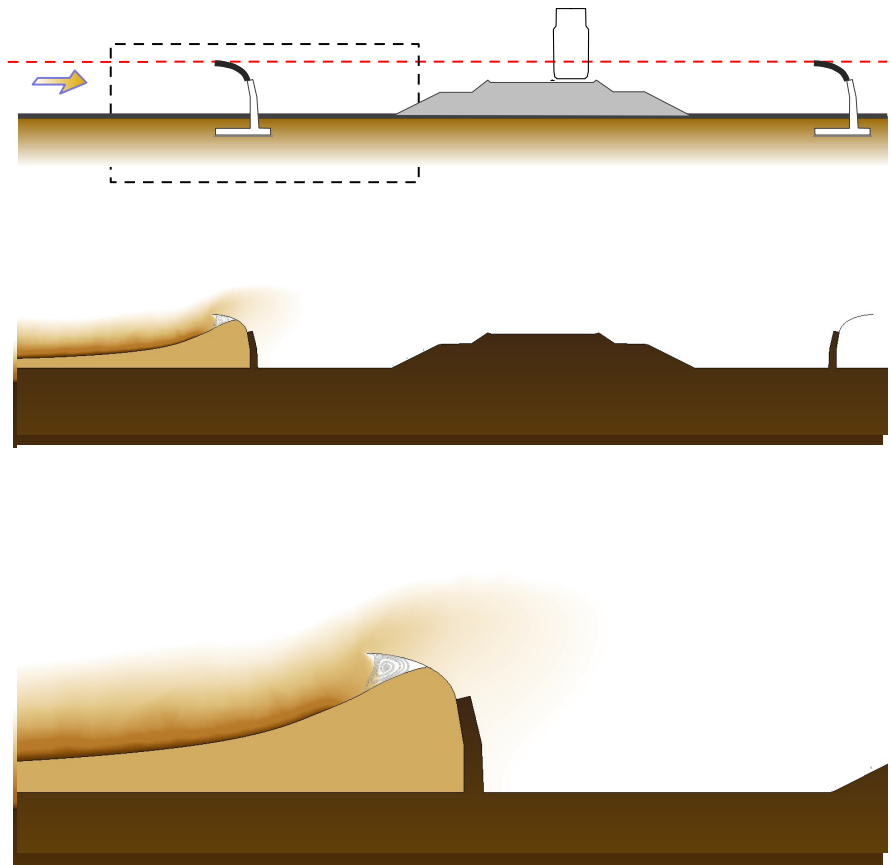


Simulation of protection systems

vertical wall

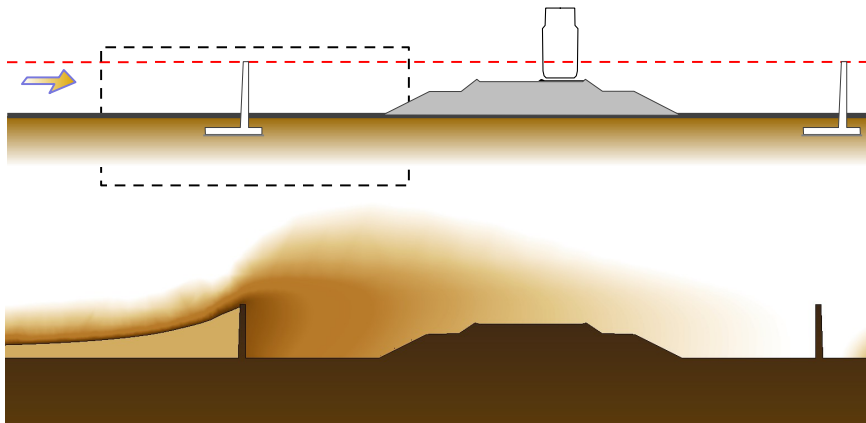


SMaRT barrier

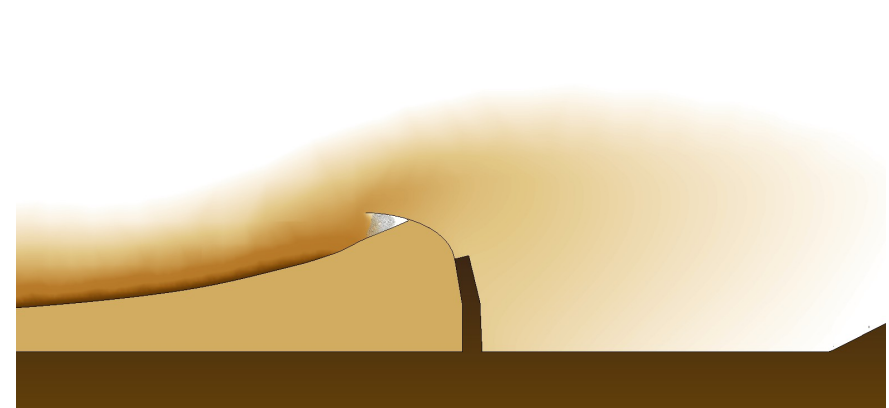
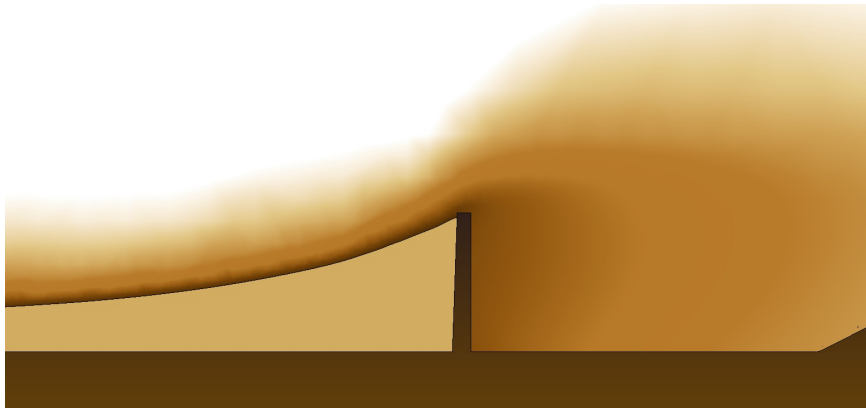
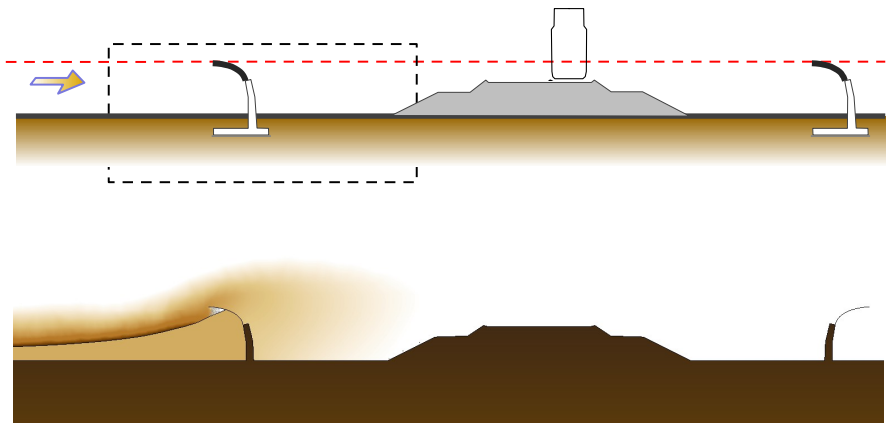


Simulation of protection systems

vertical wall

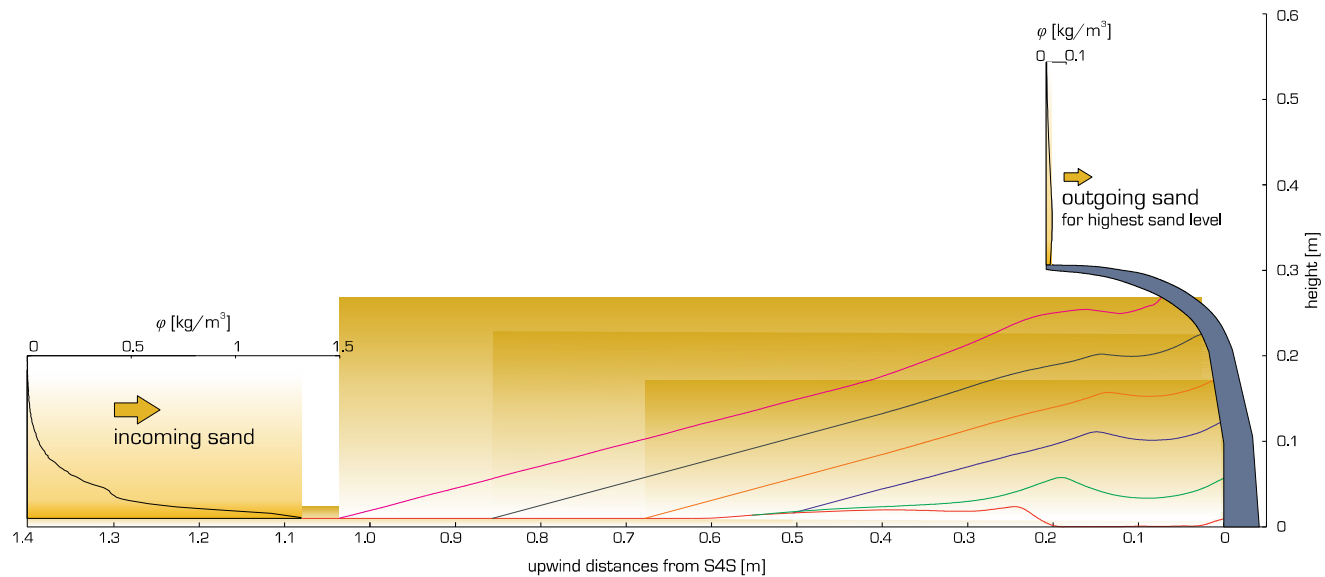
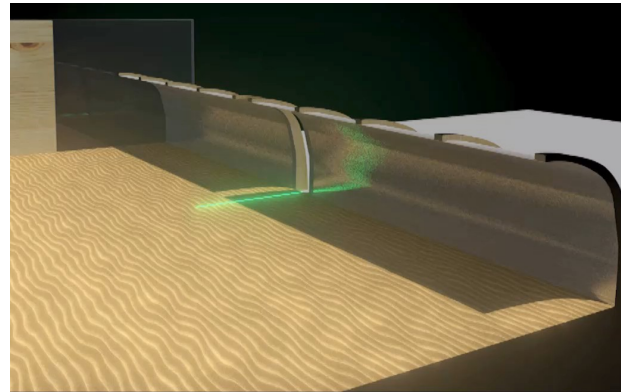
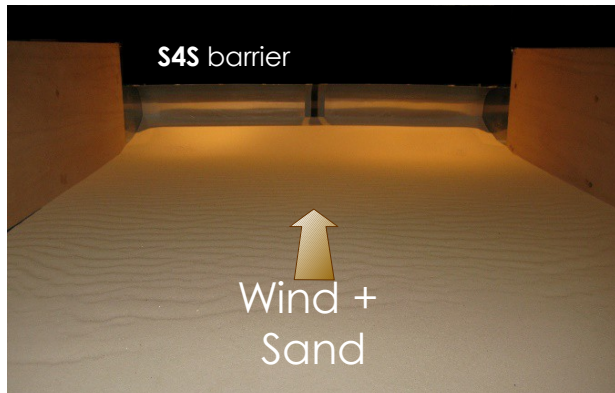


SMaRT barrier





Experimental validation

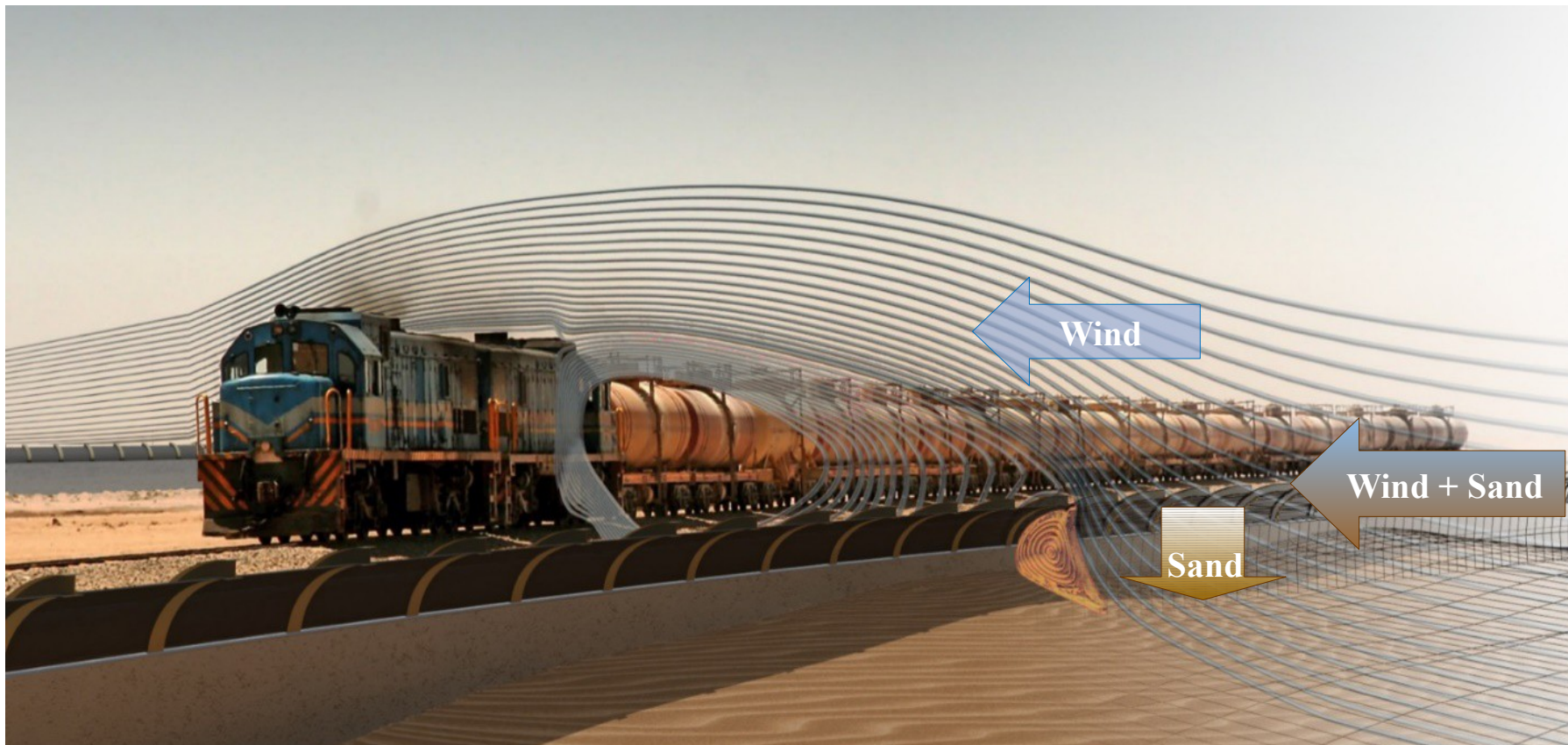




POLITECNICO
DI TORINO

Shield 4 Sand

International patent of a Sand Mitigation System
SMaRT System, PCT/IT2015/000129





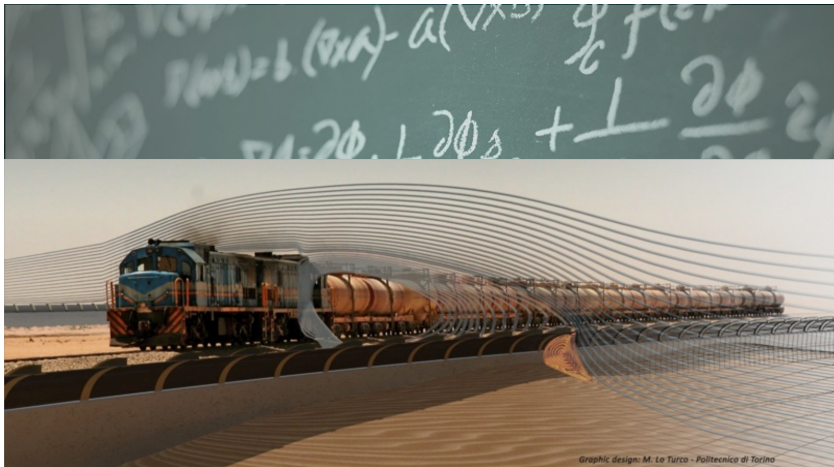
Multidisciplinarietà



Geomorfologo



Ingegnere del vento e delle strutture



Modellazione matematica



High performance computing